

New York's Public Geographic Information System

Open the GIS module by selecting it from the SHPO On-line options page.

We will do a test search for resources in the town of Colonie, Albany County.

From the Function Menu select **"ZOOM TO LOCATION."**

A "pop-up" box will open. From this box you can search for a county, a municipality or you can search by USGS Quadrangle map name.

For this exercise select the MUNI option and click on it.

The program will ask you to select a county from a drop down menu. Select (click on) "ALBANY."

A new drop down menu will appear with a list of municipalities in Albany County.

Scroll down the menu and select (click on) Colonie.

Click on the **SUBMIT** button under the **MUNI** name box in the **Zoom to Location** pop-up box.

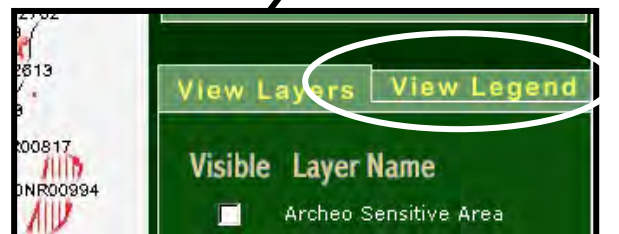
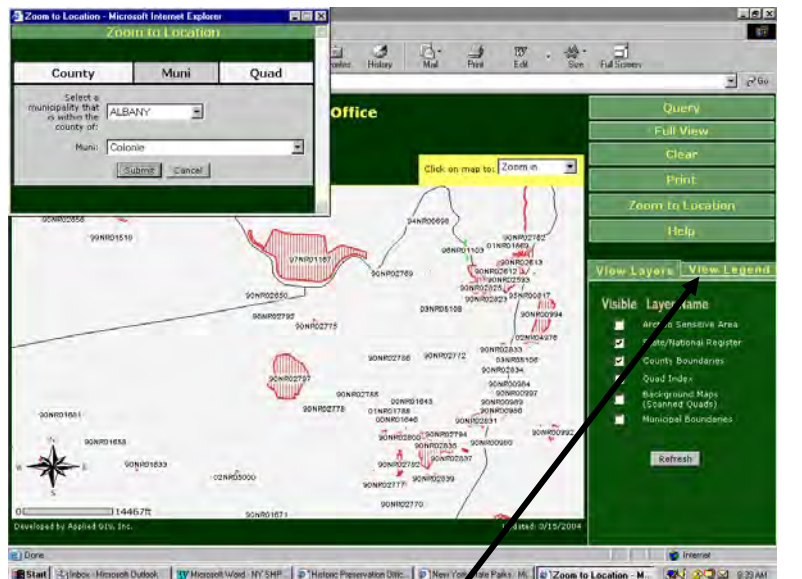
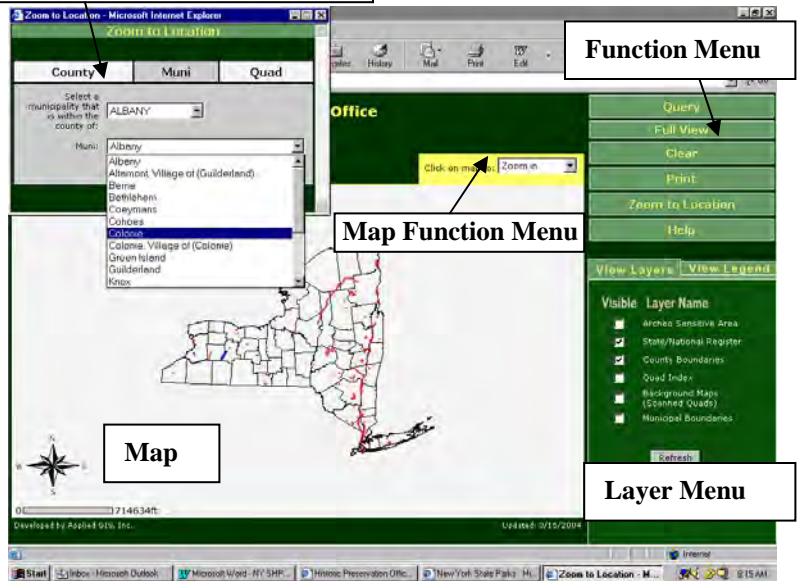
The program will zoom into the area of the town of Colonie, Albany County.

Red, blue and yellow-striped areas will appear (depending on your search area). These areas are the State and National Register of Historic Places sites.

Click on the **VIEW LEGEND** tab at the right of the screen for more information on the key to understanding what the colors represent.

The numbers located with each "listed place" are reference numbers assigned by the NYSHPO for each property or district placed in the registers. These reference numbers can be used to find nomination information in the Document Imaging program and also the SPHINX database.

Zoom to Location "pop-up"



To **IDENTIFY** each of the properties "listed" in the registers go to the **MAP FUNCTION MENU**. From this drop down menu select **IDENTIFY**. Place the cursor on any portion of the Reference number of stripped area and a pop-up box will open identifying what the name of the site is and other information about the property.

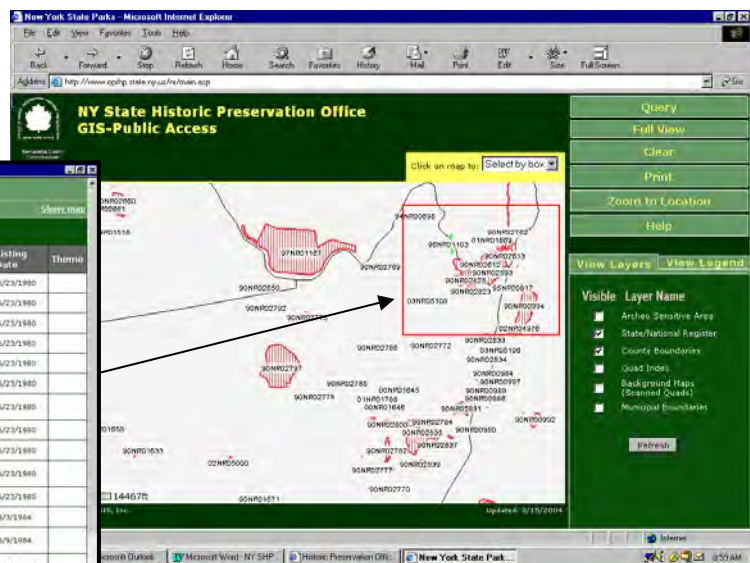
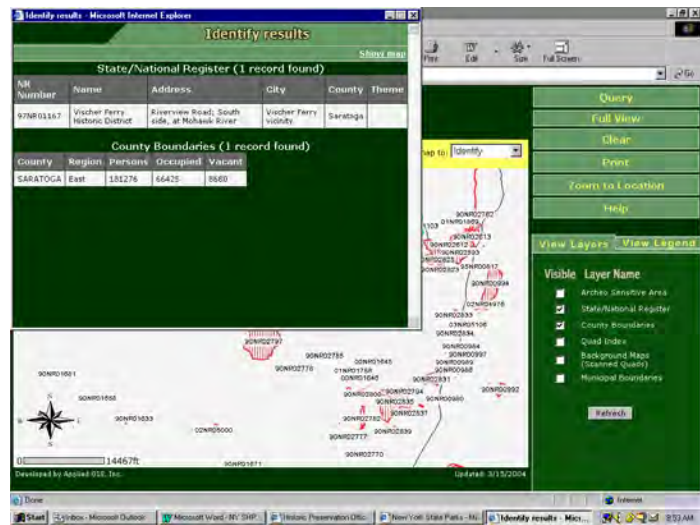
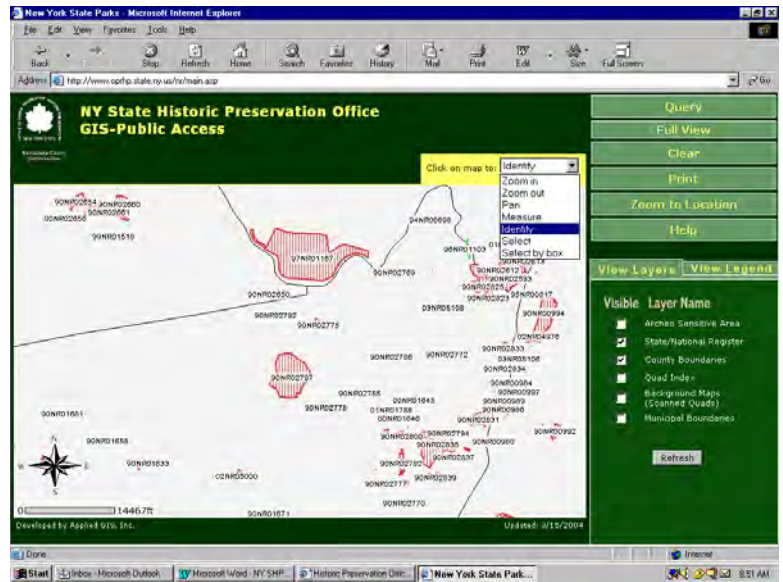
You can also identify multiple listings in an area by selecting the **SELECT BY BOX** option from the **MAP FUNCTION MENU**.

Once you select this option simply hold down you left mouse key and use the cursor to draw a box around the area you want to identify.

Once the box is drawn the system will return a list of all listed properties that are wholly or partly within the area of the box.

From this list you can select **one** property by clicking on the round "Radio" button next to the name of the property. Then click on the "SELECT LISTING REPORT" button at the top of the page.

You can also print out the entire list by selecting the "QUERY REPORT" button.



Next we will look at the area in more detail.

First, go to the **LAYER MENU**.

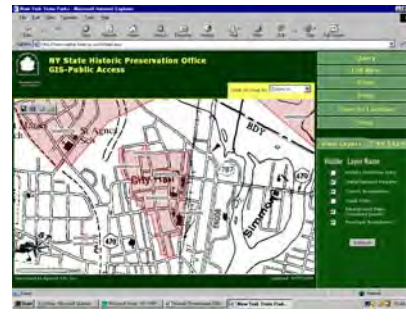
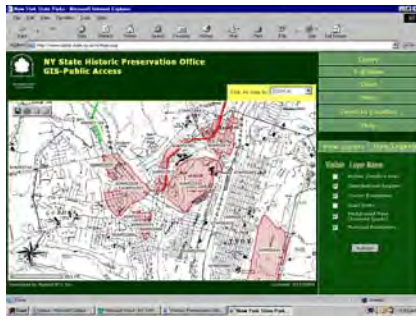
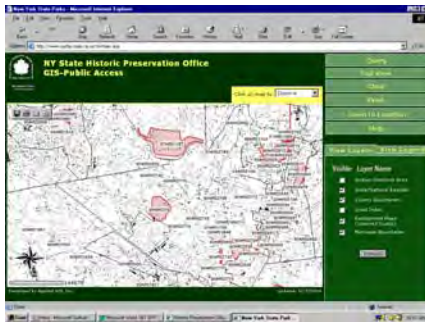
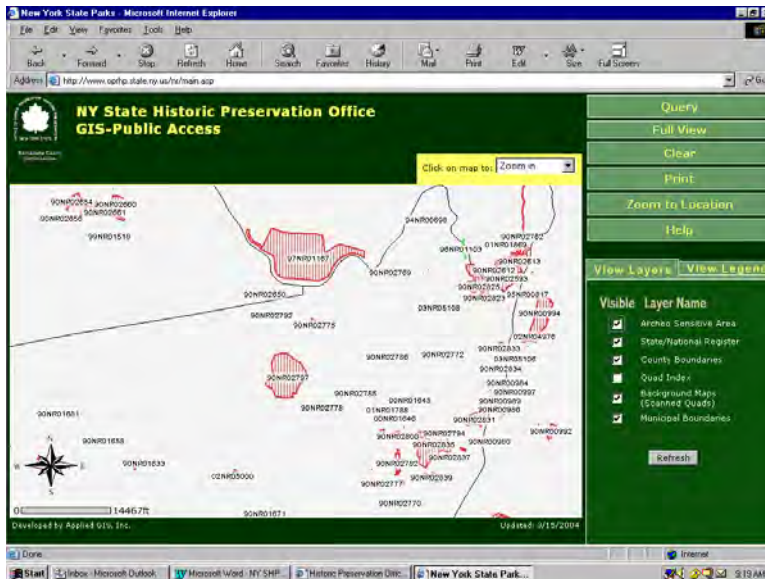
Select (Check)

- Background Maps
- Municipal Boundaries

Now click the **REFRESH** button located just below the layer names.

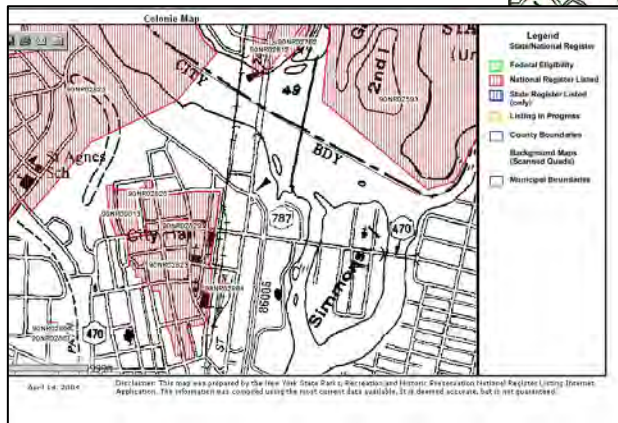
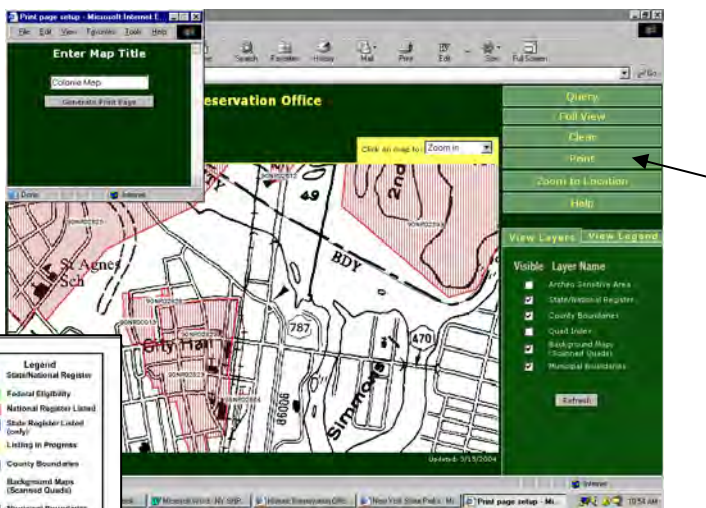
The map will be redrawn to include the boundaries of municipalities and a background map of roads and buildings will be added.

The closer you zoom in (using the **ZOOM IN** function) the more detail will appear.



To print a map, simply select **PRINT** from the **FUNCTION MENU**.

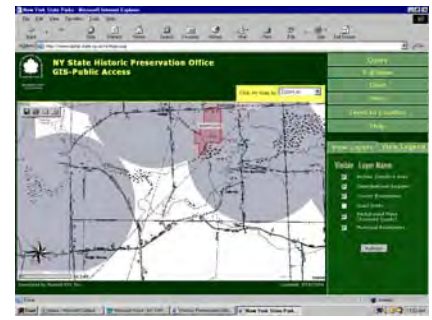
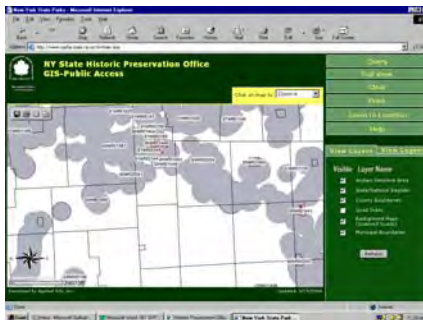
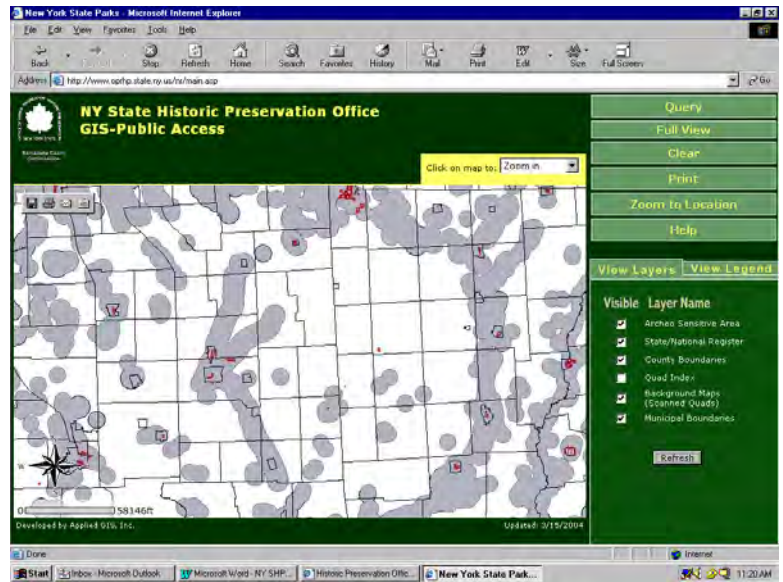
A **PRINT SCREEN** pop-up box will appear and ask you to name the map. Type in the name and select the **GENERATE PRINT PAGE** button.



To add the Archeological Sensitive Area overlay to a map click on the layer named **ARCHO SENSITIVE AREA** from the **LAYER MENU**.

Now select the **REFRESH** button at the bottom of the **LAYER MENU** area.

Grey circles or areas will appear on the map. These areas represent places of *known archeological sensitivity* within the state.



FINDING QUALIFYING CENSUS TRACTS FOR THE NYS REHABILITATION TAX CREDIT PROGRAM

To add the **TAX CREDIT QUALIFYING CENSUS TRACTS** overlay to a map click on the layer named **TAX CREDIT QUALIFYING TRACTS** from the **LAYER MENU**.

Now select the **REFRESH** button at the bottom of the **LAYER MENU** area.

If the area you are looking at is shaded **Pale Blue** your area is within a qualifying census tract that is eligible under the NYS Homeowner Tax Credit program.

If the area is shaded **Pale Blue** and has either a **RED** (National Register Listed) or **BLUE** (NYS Register Listed) hatching over it, your area qualifies for the NYS Homeowner Tax Credit Program.

